

OPEN CLASSES FOR 2020-21



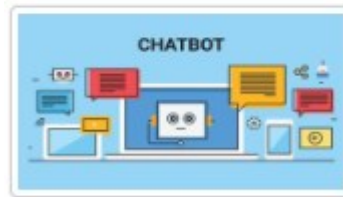
Introduction to Watson AI
Verified Certificate



Python Basics for Data Science
Verified Certificate



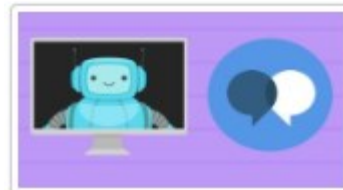
Computer Vision Fundamentals with Watson and OpenCV
Verified Certificate



AI Applications with Watson
Verified Certificate



AI for Everyone
Verified Certificate



AI Chatbots without Programming
Verified Certificate



Human Nutrition

Introduces basic principles of nutrition with emphasis on personal nutrition. Satisfies nutrition requirement of students entering health care professions.

Health and Wellness

Explores the six components of wellness: physical, social, intellectual, spiritual, emotional, and occupational. Topics include health risks, wellness behaviors, and personal behavior change in the areas of nutrition; exercise; substance abuse; stress management; cardiovascular and cancer risk factors; the aging process; and violence, death, and dying in our society. Provides tools to complete self-assessments and develop a wellness program for a healthier lifestyle across a lifespan.

Social Psych

Focuses on the behavior of humans in a wide variety of social settings and the social influences humans have on each other in those settings. This is a statewide Guaranteed Transfer course in the GT-SS3 category.

Intro to Sociology

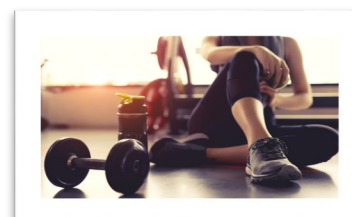
Examines the basic concepts, theories, and principles of sociology, including topics of family, religion, education, politics, the economy, health, demography, the environment and social movements through a local and global lens. Analyzes and interprets socio-historical as well as contemporary issues by using critical thinking skills and linking individual experiences to social structures.

Women's Studies

Explores the interdisciplinary field of women's studies. This course is an examination of the following topics: the historical basis of gender inequality; the history of social movements for gender equality and women's studies; women's achievements throughout history in various professional and academic fields; women's social, economic, religious, health and political status in the U.S. and around the globe; gender relations; intersectionality; cultural, media and artistic representations of women. This is a statewide Guaranteed Transfer course in the GT-SS3 category.



Intro to Mass Media



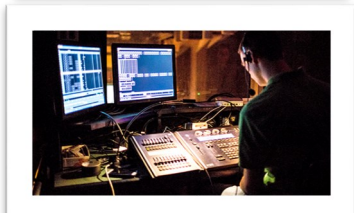
Fitness



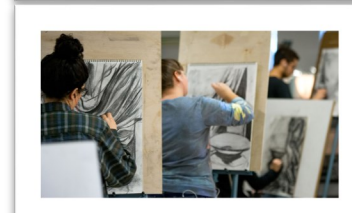
Publication



AP Art History



Production Theater



Beginning Studio Art

PLEASE SEE YOUR COUNSELOR TO REGISTER FOR THESE CLASSES.